

EDA Grant Presentation

Presented By: Justin Carter, P.E.

Director of Design and Construction Department



Topics

- Why we asked you all here
- Brief history
- What's the existing condition
- What is the grant process
- Where are we headed
- Questions

Welcome!

- Letters of Support
- Public Awareness
- Involvement



Project Location



History

- Previous location of the USS Cutter Diligence
- Built in 1967
- Purchased in September of 2023 from U.S. Coast Guard
- Docked different types of ships over the years



What is a Bulkhead?

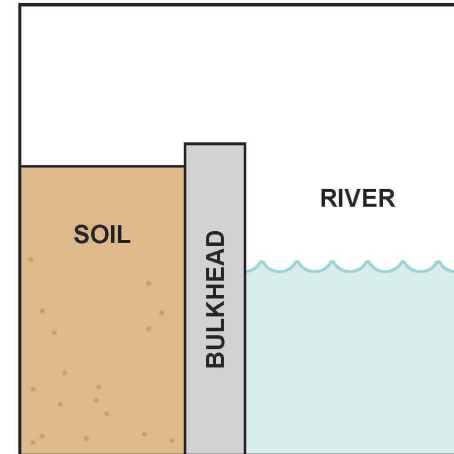
- Metal vertical wall
 - Driven deep into the ground
 - Anchors that tie back to the soil
- Purpose
 - Retains and supports material
 - Protects from erosion
 - Some act as wharfs



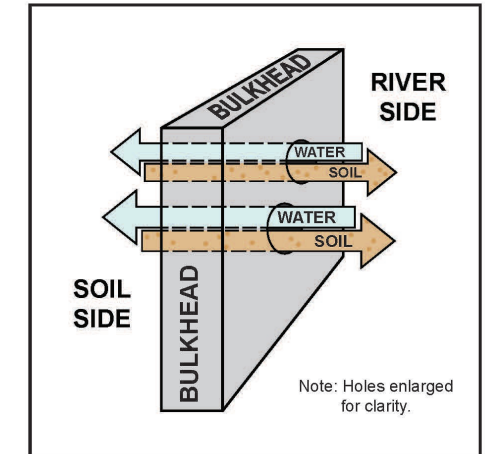
Existing Conditions

- Interim repairs just conducted
 - Patching holes
 - Repairing section loss
 - Applying corrosion inhibitor
- Material loss
- Fencing

EXISTING BULKHEAD:



CURRENT CONDITION OF EXISTING BULKHEAD:



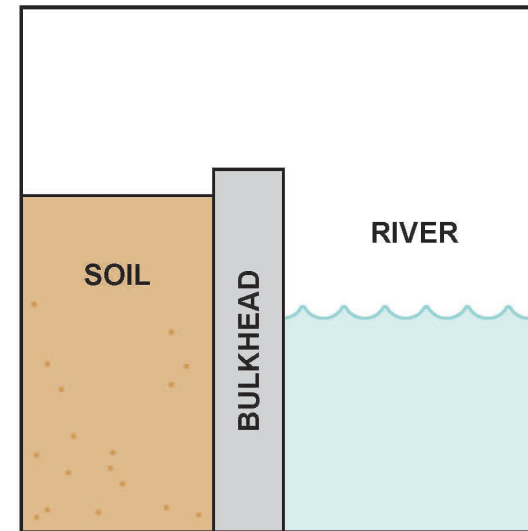
Grant Process

- Requires an 80/20 match from the City
 - \$17.5 Million Total
 - \$14.0 Million Federal
 - \$3.5 Million City
- Letters of support help bolster the grant

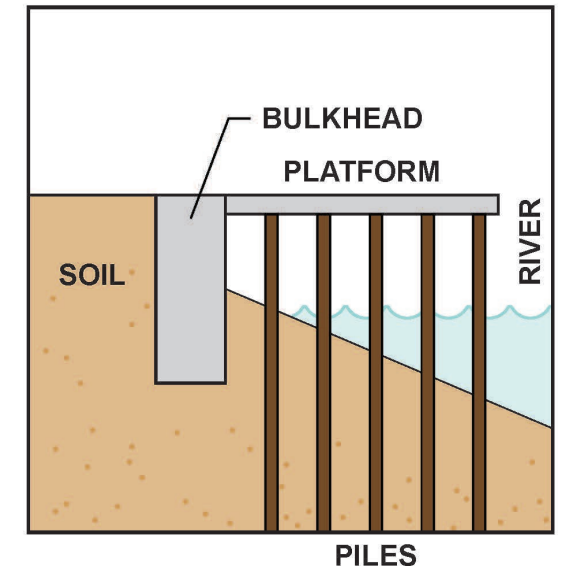
Proposed Solution

- Relieving Platform
 - Similar to the foot of Market St.
 - Looks like a big dock
- Riverwalk restored
- Projects on the surface

EXISTING BULKHEAD:



PROPOSED PLATFORM:



Questions



Justin Carter

Director of Design and Construction

Justin.Carter@wilmingtonnc.gov

(910)765-7461